

Simline 6 is a compact, versatile ISDN network simulator with 6 basic rate ports and one optional E1 primary rate port.

Training

Run practical sessions during router, video-conferencing or ISDN training courses.

Compact

Simulate 6 independent BRI lines and 1 optional PRI line on your desktop.

Demonstration

Enables confident presentation during exhibitions and customer demonstrations.

Test

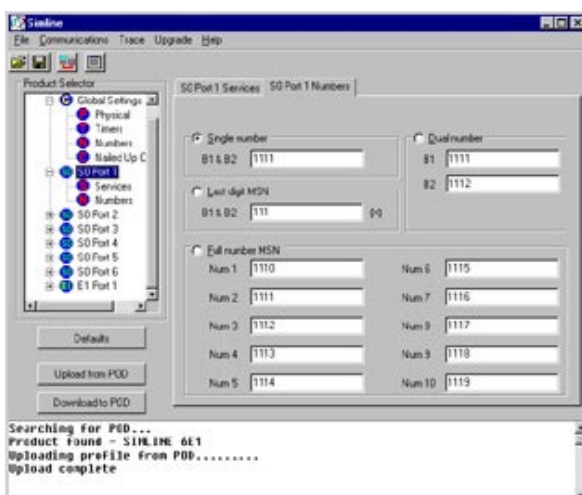
Provides perfect line simulation to evaluate products working at their best.

Development

Simulate ISDN, Leased line, fast deactivation, and supplementary services with full D channel protocol analysis.



The **Simline 6** is a high quality, compact ISDN network simulator with six basic rate S/T ports and one optional primary rate E1 port. All of these lines are simulated in one portable unit measuring just 50mm x 200mm x 130mm. Any port may call any other port using simple default telephone numbers or any user programmed numbers up to 30 digits in length. Full protocol analysis is provided for development and test purposes together with simulation of special functions such as fast deactivation, clearing cause selection, supplementary services and leased lines (nailed up B channels).



Each **Simline 6** is pre-configured for plug-and-play simplicity. Intuitive Windows software supplied, allows you to modify the configuration to suit your application.

LED's clearly indicate the status and B Channel activity on each port as well as layer 2 activation and PS1 (power source 1) provided in normal or restricted mode.

Simple Configuration

The unit connects to any suitable PC host via a standard serial port and the Windows user interface allows simple configuration of the following:-

BRI and PRI Options

- Telephone numbers (up to 30 digits) for each bearer channel.
- Supplementary services such as called/calling line ID presentation, called/calling party subaddress presentation and high/low layer compatibility presentation.
- Generation of any required Clearing Cause values to test terminal responses.

BRI Options

- Numbering mode (single number, dual number or MSN).
- Leased line operation allowing the path between B channels to be fixed.
- Configure timer values for dropping layer 2 and layer 1 at the end of a call to allow close emulation of different European networks.

Once configured, changes can be saved to the **Simline 6** which may then be disconnected from the PC host and used independently.

Protocol Analysis

The powerful protocol trace function is a useful tool for product test and development applications. All D channel protocol messages transmitted and received are displayed on each line with user selectable port, layer and message filters. The analysis is displayed on screen and optionally saved to disk as a text file for later review.

Specification

Switch Type Supported

ETSI Euro-ISDN (subset of CTR3)

Interface Types

Basic rate ports: S/T interface
Primary rate port (option): E1 interface

Rear Panel Ports

Power - 8 pin mini DIN
Serial port - 9 way D type
Auxiliary Port
Primary Rate - E1 RJ45 (option)

LED Indicators

B1 / B2 Channel Active
PS1 Normal
PH (Physical Layer - Layer 1) Active
DL (Datalink Layer - Layer 2) active

Configuration Interface

Serial Port - 9 way D type

PC Operating System

Windows 95/98/NT4/2000/XP (Note: PC only required for configuration)

PS1 (Power Source 1)

Supplied as Normal (Restricted optional)

Power Supply

External universal power adapter with IEC connector

Size/Weight

50mm x 200mm x 130mm, (8" x 2½" x 5¼")
900g, (1lb, 10oz)

Operating/Storage Temperature

0 - 40° C

Relative Humidity

90% non-condensing

*Specifications subject to change without prior notice.
Issue 1.4 ©Astricom Ltd 2002.
Windows is a registered trade mark of Microsoft Corporation.*



Distributed by: